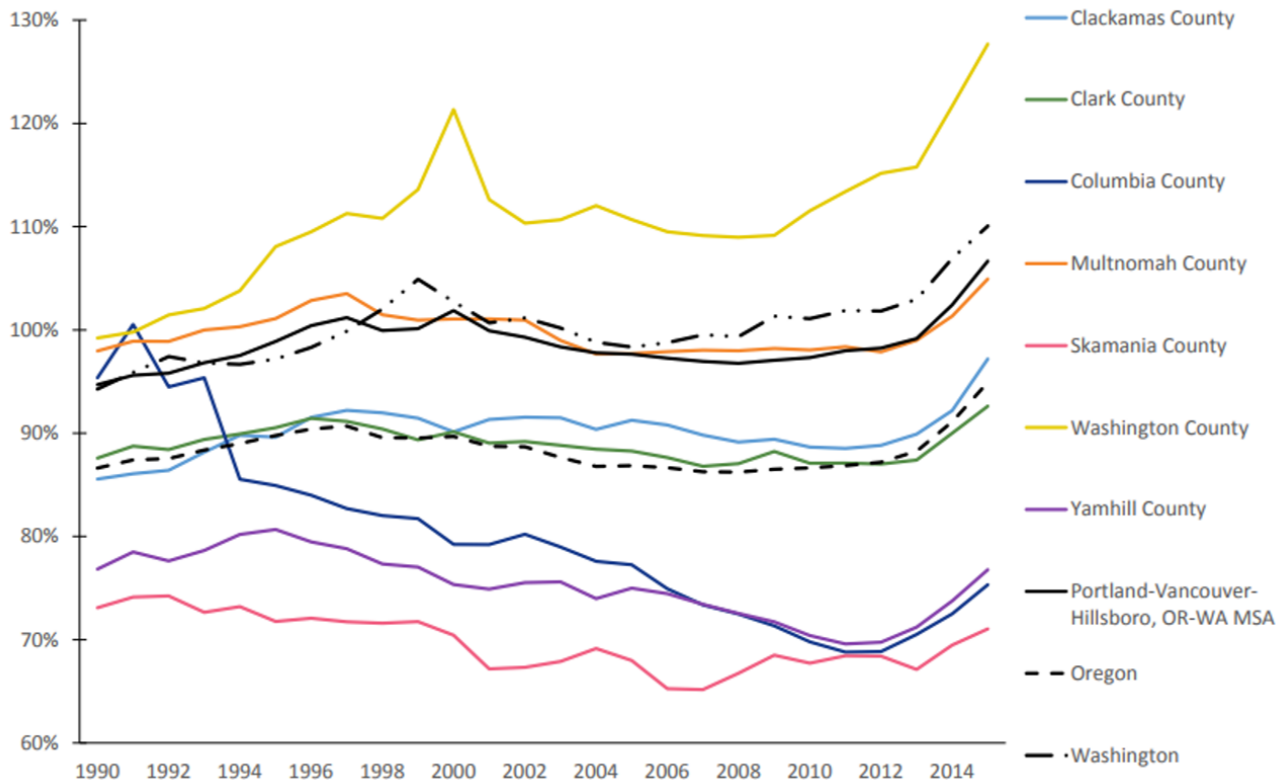


Indicators: Average Wage per Job

Portland MSA as a percentage of the US metro average wage, 2001-2015



Source: Bureau of Economic Analysis, Table CA30

Across the region, the average wage per job as a percentage of the US Metro Wage per Job has been increasing since 2013. In 2015, the average wage per job in the Portland-Vancouver-Hillsboro MSA was 107 percent of the average wage per job in the Metro United States. However, of the region's seven counties, just two have an average wage per job higher than the US Metro average wage (\$55,102): Multnomah County (\$54,393) and Washington County (\$57,057). Skamania County has consistently had the lowest average wage, just 71% of the US Metro in 2015.